

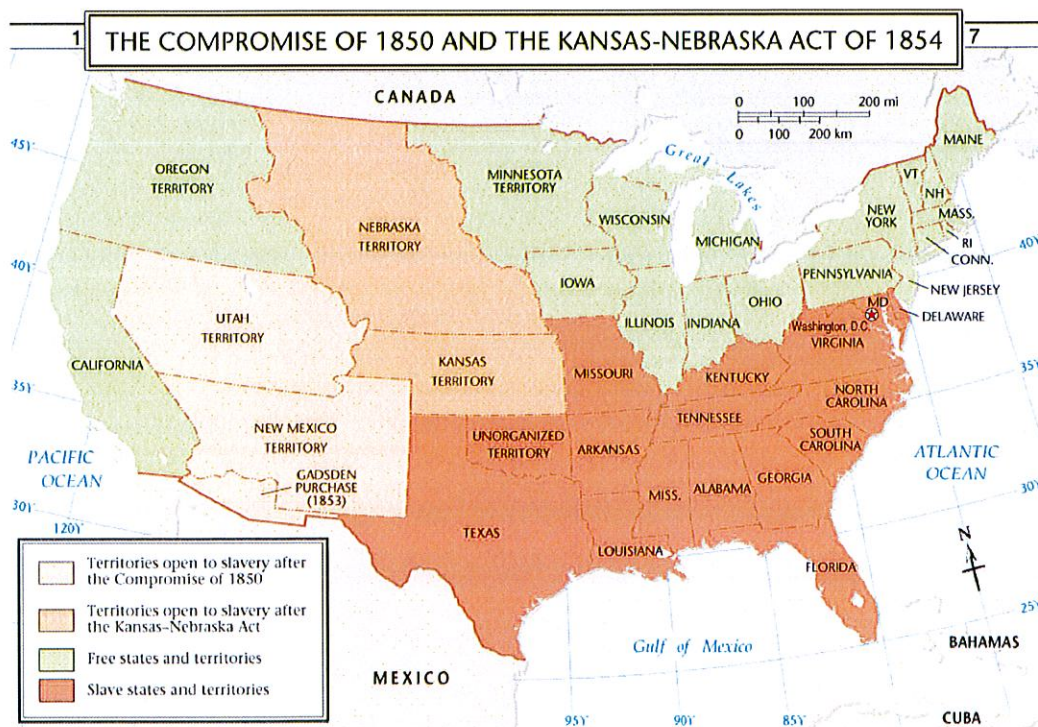
US History Honors

PART 1a: Both/And. See vocabulary sheet for words that could be used here.

PART 1b: Map (see attached for directions.)

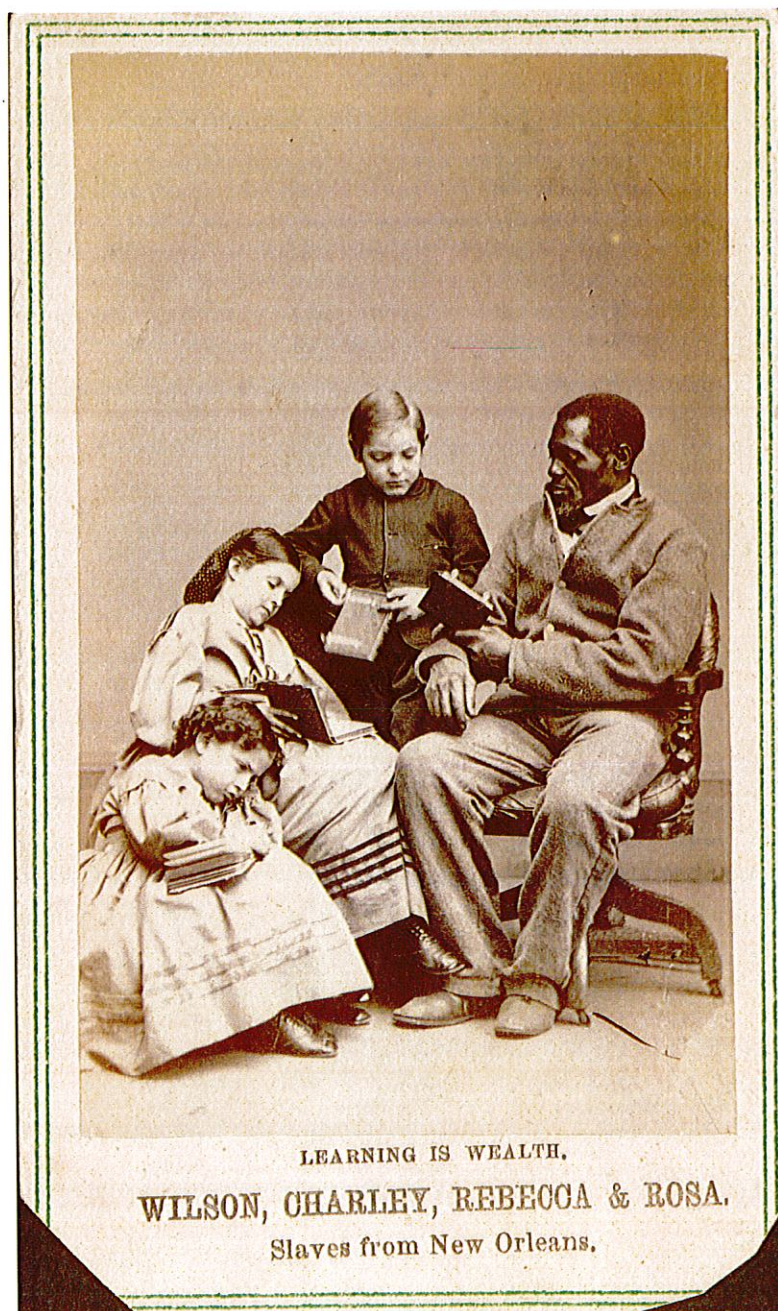
A) Thomas Jefferson wrote the following passage in 1820, over 40 years before the Civil War began. Why did Jefferson believe that a conflict was coming? In your answer, be sure to describe the historical context of the time, explain whether or not his prediction came true, and how his experience as a “Founding Father” played a role in his interpretation. Use the passage and map below in your answer.

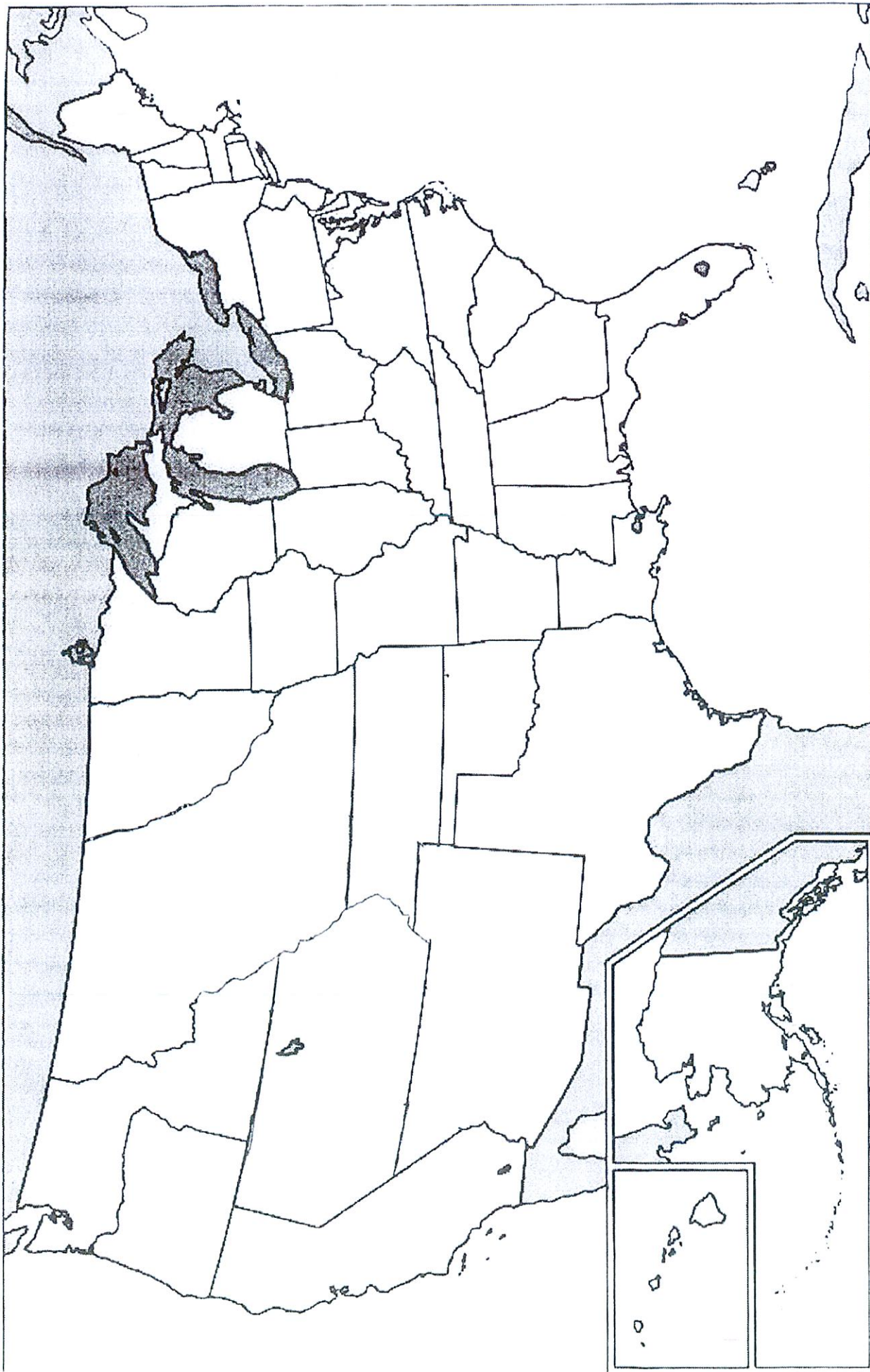
A geographical line, coinciding with a marked principle, moral and political, once conceived and held up to the angry passions of men, will never be obliterated; and every new irritation will mark it deeper and deeper... But as it is, we have the wolf by the ears, and we can neither hold him, nor safely let him go. Justice is in one scale, and self-preservation in the other... I regret that I am now to die in the belief, that the useless sacrifice of themselves by the generation of 1776, to acquire self-government and happiness to their country, is to be thrown away by the unwise and unworthy passions of their sons, and that my only consolation is to be, that I live not to weep over it.



B) Below is a quote from Howard Zinn's A People's History of the United States and abolitionist propaganda from the 1830's. Both of them are making a similar argument about race in America. What is the argument that Zinn makes, and what is the argument that the image makes? In your answer, be sure to summarize the arguments, explain how the geography of America helped to both help and hurt racism, and provide examples from the quote and image to support your answer.

"This unequal treatment, this developing combination of contempt and oppression, feeling and action, which we call "racism"—was this the result of a "natural" antipathy of white against black?...The point is that the elements of [racism] are historical, not "natural." This does not mean that they are easily disentangled, dismantled. It means only that there is a possibility for something else, under historical conditions not yet realized."





On this map, label the following things: the year it represents, all states and territories, the seceding states, the border states, the Union states, all 5 great lakes, the Mississippi River, the Appalachian Mountains, Chesapeake Bay, Gulf of Mexico, the Bahamas, Cuba,

United States in 1860

Free States, Slave States, and Territories

